

SALADO
quarry



Contents

- Sonoma 4
- Tuscany 6
- Chateau 8
- LedgeStone 10
- Architectural
Cut Stone 11



Sonoma Autumn



Tuscany Hickory



Sonoma Red (with cut ends)



Sonoma Cream

Residential



Sonoma Lueders



Chateau Gold



Tuscany White

Sonoma

- Saw cut on top and bottom to specific heights with split face and random lengths
- Available in height sizes 2"-16"



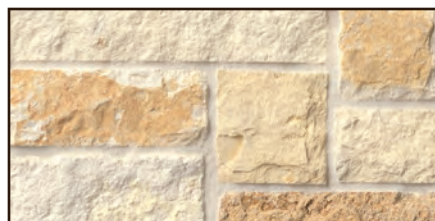
Sonoma pattern



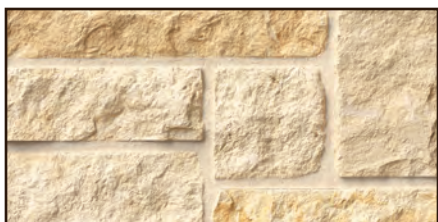
Alta



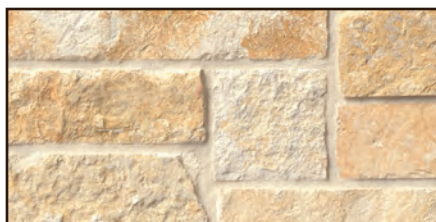
Autumn



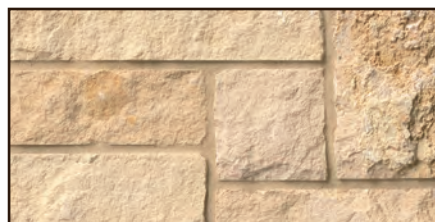
Cave



Cream



Gold



Latte



Lueders



Matera



Red



Sonoma Blend



Tan

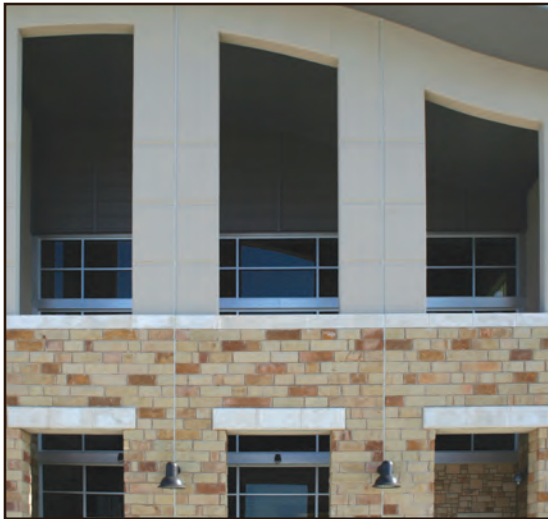


Vermeer Saw



White

Sonoma



Sonoma Matera



Sonoma Cave



Sonoma Autumn



Sonoma Latte



Sonoma White



Sonoma Cream

Tuscany

- Rustic rectangles split on all sides
- Random heights and lengths



Tuscany pattern



Autumn



Balcones



Brown



Cream



Gold



Hickory



Latte



Rattan



Red



Tan



White

Tuscany



Tuscany Balcones



Tuscany Cream



Tuscany White



Tuscany Autumn



Tuscany Hickory

Chateau

- Random shapes and sizes
- Mosaic/white flagstone pattern



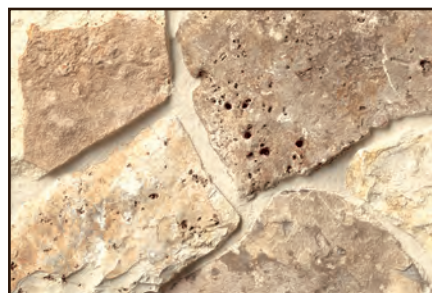
Chateau pattern



Autumn



Balcones



Brown



Cream



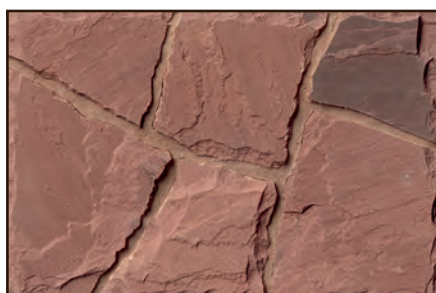
Gold



Hickory



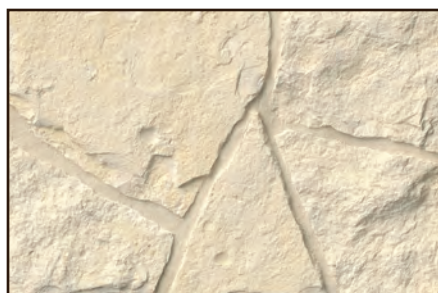
Latte



Red



Tan



White

Chateau



Chateau White



Chateau Brown



Chateau Hickory



Chateau Gold

Ledgestone

- Narrow profile random rectangles
- Sonoma Ledgestone: saw cut top and bottom with split face
- Tuscany Ledgestone: rustic rectangles split on all sides 1" to 3"



Ledgestone pattern

Sonoma Ledgestone



Autumn



Cave



Cream



Gold



Latte



Lueders



Matera



Red



Tan



White

Tuscany Ledgestone



Autumn



Castle Autumn



Castle Desert



Balcones



Cream



Gold



Hickory



Red



Tan



White

Architectural Cut Stone

- Custom dimensional cut, natural stone for commercial and high-end residential
- Architectural elements each manufactured to your specifications, including:
paving | headers | sills | caps | quoins | window surrounds | smooth cut stone panels



Almond



Canvas



Cashmere



Ivory



Linen



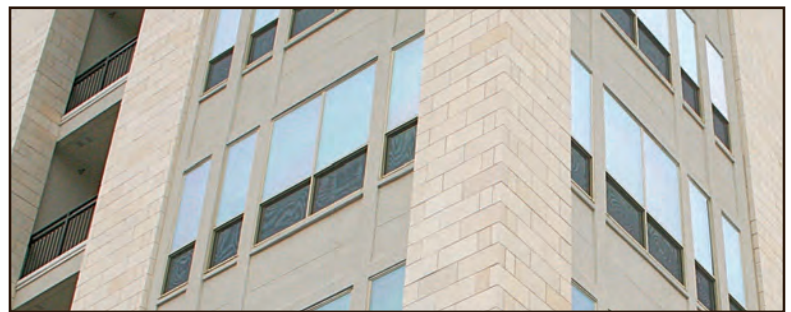
Merlot



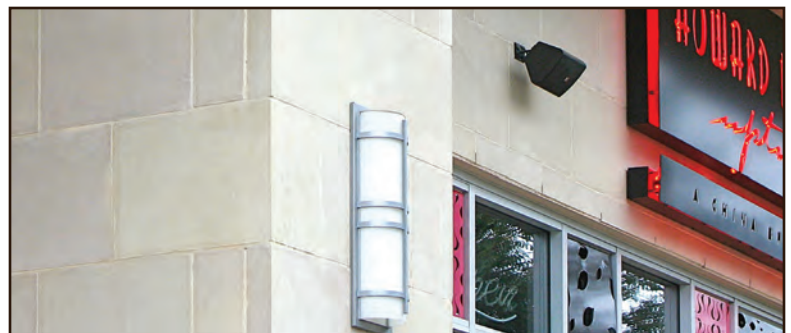
Pewter



Merlot



Linen



Cashmere



Ivory



SALADO

quarry

tel (254) 793 3355 fax (254) 793 0182 web saladoquarry.com

We used great care in trying to most accurately capture the colors and textures of our stone. Please consider the following when making selections of any natural stone:

- As a product of nature, one of the wonderful characteristics of using stone is the unique aesthetic of your finished project. Natural stone will have variations and ranges of colors and textures. When feasible, please obtain physical samples.
- Limitations of image capture, printing, computer and computer screens, in addition to installed lighting conditions can impact perceptions of images compared to physical stone.
- Installation methods can change the look of a particular cut/color of stone. There are many ways to install the same stone that can dramatically change the look of your finished project. Mortar color, joint sizes, dry stacking, cut ends, pitched faces are just a few of the variables that masons control on-site. Please share your vision of the finished project clearly with your builder, mason, or installer (including pictures) to ensure the best outcome.

